

2021-2022



ANNUAL REPORT

OUR VISION: TO BE THE HEALTHIEST STATE IN THE NATION



OUR VALUES

Innovation
Collaboration
Accountability
Responsiveness
Excellence

OUR MISSION

To protect, promote and improve the health of all people in Florida through integrated state, county and community efforts.

FLORIDA DEPARTMENT OF HEALTH IN PASCO COUNTY

10841 Little Rd.
New Port Richey, FL. 34654
727-619-0300
Pasco.FLHealth.gov
@HealthyPasco

PRODUCED BY THE FLORIDA DEPARTMENT OF HEALTH IN PASCO COUNTY

The mission of the Florida Department of Health is to protect, promote and improve the health of all people in Florida through integrated state, county, and community efforts.

In Pasco County, the programs and services fall under six divisions: Administrative Services, Community Health, Infectious Disease, Environmental Health, Family Planning and Emergency Preparedness and Response. Before 2020, all programs focused operations on its services, and once the COVID-19 pandemic hit in early 2020, all were forced to respond to the public health threat. In 2022, the programs are resuming their focuses on operations for all services.

MESSAGE FROM THE HEALTH OFFICER



Health Officer “
Mike Napier

TYPE TEXT HERE

GOVERNOR

Ron DeSantis

LT. GOVERNOR

Jeanette Nunez

SURGEON GENERAL

Dr. Joseph Ladapo

PROGRAM MANAGER:

Megan Carmichael

PIO/CONTENT EDITOR:

Christina Louv

LAYOUT/DESIGN:

Tatiana Badal

COMMUNITY HEALTH PROMOTIONS



HEALTHY EQUITY

Empower communities, organizations, and policy makers to uncover health differences rooted in race, ethnicity and vulnerable populations and give individuals and communities the opportunity to live happy, healthy, and productive lives.

The Florida Department of Health's Office of Minority Health and Health Equity (OMHHE) works with government agencies and community organizations to address the barriers inhibiting populations from reaching optimal health. A focus on health equity means recognizing and eliminating the systemic barriers that have produced disparities in achieving wellness. In response to Chapter 2021-1700 of the Florida Statute, effective July 1, 2021, each county health department (CHD) has been provided resources to create a Health Equity Plan to address health disparities in their communities. Funds are being provided to county health departments (CHDs) to support the Office of Minority Health and Health Equity (OMHHE) in advancing health equity (HE) and improving health outcomes for racial and ethnic minority populations through health promotion, partnership engagement, education and outreach and implementation of focused initiatives as authorized by section 381.735, Florida Statutes. Funding sources \$4.4 M GR recurring, \$55,000 per CHD July 1st to June 30th REDCH. The purpose of the Health Equity Plan is to increase health equity within Pasco County. To develop this plan, DOH-Pasco followed the FDOH's approach of multi-sector engagement to analyze data and resources, coordinate existing efforts, and establish collaborative initiatives. This plan addresses key SDOH indicators affecting health disparities within Pasco County.



SOCIAL DETERMINANTS OF HEALTH PROJECTS

In 2022, the All4Health Community Health Needs Assessment along with the Community Health Assessment Identified "Substance Misuse and Transportation" to be SDOH in Mental Health & Mental Disorders. The 2022 CHNA survey indicated that the number one SDOH identified was Substance Misuse at a 46% and transportation at 33.88%. To improve the Mental Health and Mental Health Disorders disparity Pasco County is addressing the SDOH by exploring avenues and projects that will increase transportation and decrease substance misuse concerns by collaborating with existing partnerships or new ones.

NEIGHBORHOOD AND BUILT ENVIRONMENT - TRANSPORTATION PROJECT

Background

The Community Health Needs Assessment survey identified that 33.8% obtaining access to health care is a top social determinant of health. The current SDOH is important to address by implementing a project as mental health and mental health disorders is one of the top disparities in the county. Mental health emerged as a top priority area through previous and the current CHA process. Pasco performed relative to Florida on several mental health indicators but saw higher rates of deaths by suicide and lower rates of mental health care providers.

Description and Deliverables

The health equity taskforce will make a list of mental health services and providers and assess if they are currently paying for transportation of their patients. Then we determine the overall effectiveness, and if implemented to the project how would that benefit access to care for patients and how to target the vulnerable populations.

CORE: HEALTH CARE ACCESS AND QUALITY – SUBSTANCE MISUSE PROJECT

Background

Forty-six percent (46%) of community respondents ranked illegal drug use/abuse of prescription medications and alcohol abuse/drinking too much as important health issues to address. From the secondary data results, there are several indicators within Alcohol and Drug Use health topic that raise concerns for Pasco County. The worst performing indicator under this health topic is the death rate due to drug poisoning in which Pasco County is in the worst 25% of counties in the state and the nation. In Pasco County, there were 32.1 deaths due to drug poisoning per 100,000 people in 2017-2019, which is higher than both the state (23.6 deaths/100,000 population) and national values (21 deaths/100,000 population). Additionally, Age-Adjusted Drug and Opioid-Involved Overdose Death Rate in Pasco County is 36.1 deaths per 100,000 population. Another indicator of concern is Teens who Use Alcohol. The percentage of teens who Use Alcohol in Pasco County are among the worst 25% of counties in the state with (25.4%).

Description and Deliverables

Pasco County is one of the 12 counties in Florida partnering to implement a network of addiction care
A program structure is designed to disrupt the revolving door of addiction and overdose.
The project aims to expand every aspect of overdose response, treats all primary and secondary impacts of substance use disorder and care and peer navigators are directly within an emergency department, to achieve sustainable overall health care.



PACE-EH DOH-PASCO

Background

The Protocol for Assessing Community Excellence in Environmental Health (PACE EH) guides local public health officials and communities through a process to explore the broad physical and social environments that impact health and safety. The assessment process engages communities in a series of tasks to investigate the relationships among what they value, how their local environment impacts their health, and what actions are necessary to live safer and healthier lives. Environmental health extends beyond technical solutions and includes human rights and equity as well. A thoughtful implementation of a PACE EH assessment process truly promotes community collaboration for all.



Description and Deliverables

The Florida Department of Health in Pasco County identified a community from the Community Health Needs Assessment (CHNA) and executed a PACE-EH project for the Holiday community. Working in collaboration with the Holiday community leaders a survey was created to identify the major health impacts. The survey results yielded many health areas that require improvement for the overall community.

EMERGENCY PREPAREDNESS AND RESPONSE



As we were very lucky this year, we did have two activations.

Hurricane Ian had a total of **120** clients with **42** caregivers. Wiregrass Ranch High School had **33** clients and **15** caregivers and was open for 3 days. Fasano had **87** clients with **27** caregivers and was open for 4 days.

Tropical Storm Nicole was a different storm for us, the only shelter to open was Fasano with **1** client, **0** caregivers, and was open for 1 day.

ENVIRONMENTAL HEALTH

- DOH-Pasco investigated **380** complaints and issued **1,546** on-site sewage treatment disposal systems permits.
- **5,530** community inspections were completed, including food service, RV/mobile home parks, swimming pools, group care, biomedical waste/tattoo/body art, tanning and migrant labor camps.
- The Freshwater and Coastal Beach Monitoring Program and the Well and Limited Use Well Surveillance Programs collected **762** water-quality samples to inform the public health hazards.



FAMILY HEALTH SERVICES

BREAST AND CERVICAL CANCER EARLY DETECTION PROGRAM

The Breast and Cervical Cancer Early Detection Program (FBCCEDP) provided **331** initial mammograms, **157** pap smears, **13** breast biopsies and diagnosed **8** women with breast cancer and received treatment through the Mary Brogan Medicaid program. The FBCCEDP also partnered with 1 mobile mammography bus in Pasco County.



DIETETIC INTERNSHIP

The dietetic internship graduated **14** Florida Department of Health employees from nine counties, and four non-employees of which **14** have already passed the Registered Dietitian exam. The program also assisted one Florida Licensed Dietitian with earning their Registered Dietitian credential.

FAMILY PLANNING

- More than **2,161** clients received birth control counseling, education and contraception during **3,365** Family Planning visits, which resulted in **36,858** services rendered.
- Assistance with sterilization services (vasectomy or tubal ligation) was provided to **15** clients.



HEALTHY START

897 pregnant women and children up to the age of **3** received **17,594** care coordination services, including home visiting services.

IMMUNIZATIONS

CHILD IMMUNIZATIONS

Vaccines were provided to **3,431** children. Total visits **3,816** resulting in **8,176** total services.



ADULT IMMUNIZATIONS

Vaccines were provided to **1,543** adults. Total visits **1,866** resulting in **3,253** total services.



REFUGEE HEALTH

More than **430** clients received refugee services. There was a total of **1,088** visits, and a total of **5,019** services.



TEEN HEALTH

Teens who adopt an effective or higher method of birth control was **91.6%**.



WOMEN, INFANTS, CHILDREN (WIC)

- With WIC assistance, participants spent over **\$7.8 million** on health foods in our local grocery stores.
- An average of **8,680** WIC participants were served monthly.

INFECTIOUS DISEASE SERVICES

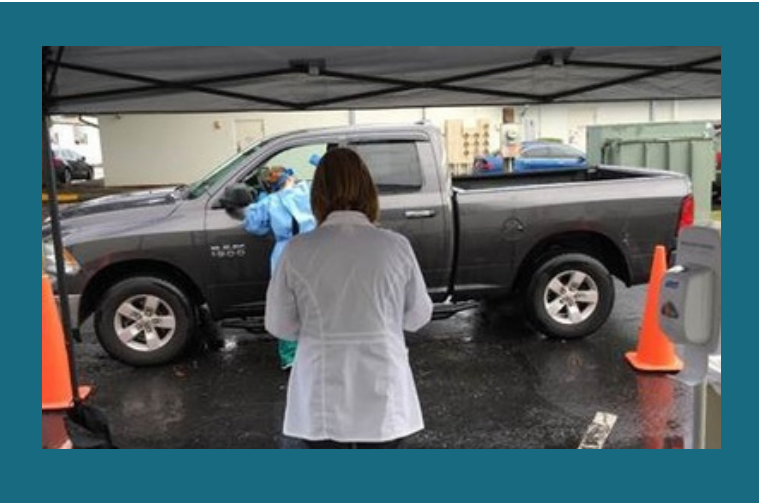
COVID-19 VACCINATION PLAN

A COVID vaccination plan was created and implemented in Pasco County through collaboration with DOH-Pasco, Pasco County Emergency Management, St. Leo University, Pasco Fire Rescue, and other community partners. The plan included high-volume drive thru COVID vaccination 5 days a week at two locations in Pasco County. Forty-six (**46**) PODS were set up at 55+ communities, health care and dental facilities, fire rescue, schools, and other community-based organizations. As of October 2021, 66% of Pasco's population has been vaccinated, plus numerous other Florida residents who traveled to our drive-thru open PODS.

Also provided was education and guidance to at least **10** local organizations and/or businesses in infection control best practices.

DOH-Pasco environmental health, clinic, and preparedness staff provided infection prevention education and assessment at **53** out of **121** long term care facilities in Pasco County.

Timeline of COVID-19 can be viewed here:
[CDC Museum COVID-19 Timeline | David J. Sencer CDC Museum | CDC](#)

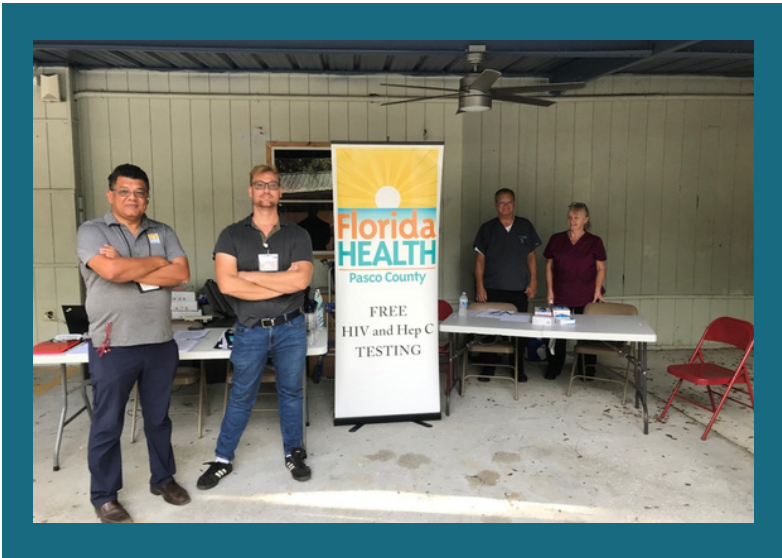


COVID-19 VACCINATION DISTRIBUTION

2020: DOH-Pasco distributed **533** COVID 19 vaccines. This was towards the end of the 2020 year as vaccines just became available.

2021: DOH-Pasco distributed **49,158** COVID 19 vaccines. The highest year as vaccines became available to everyone and in local pharmacies, physician offices.

2022: DOH-Pasco distributed **630** COVID 19 vaccines.



HEPATITS A/MENINGITIS

DOH-Pasco distributed **32** Hepatitis A vaccines and **132** Meningitis vaccines. Meningitis, COVID-19, Hepatitis A along with Monkey Pox educational materials were given out at **4** outreach events at Sawmill and **2** outreach events in the Dade City clinic.

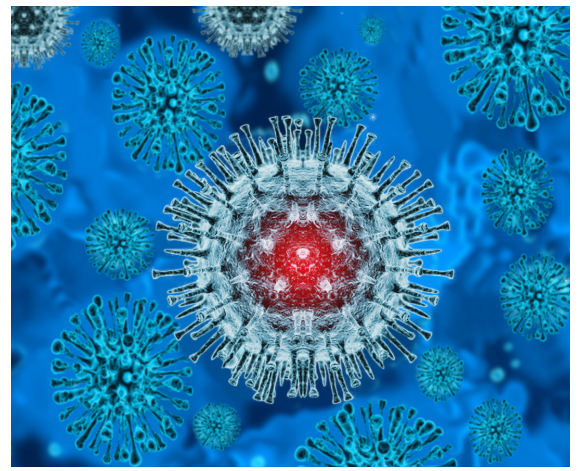
HIV/AIDS

- HIV testing through outreach staff was **352**.
- Jail testing staff tested **190** inmates
- **In 2022, 878** HIV tests were completed by community-based partners. Two additional partners were added for a total of five CBO's.
- **68** new HIV positive cases in Pasco County and 61 were linked to care. Additionally, **78** previous HIV positive clients were re-connected to care.
- DOH-Pasco clinic completed **9** test and treat and **23** re-connect to care visits.
- **During 2022**, staff successfully located and followed **3** HIV plus mothers throughout their pregnancy and birth.
- The Ryan White program provided **160** medical visits to **53** clients and provided **\$11,306** in laboratory services to uninsured HIV plus clients.
- Additionally, **29** HIV plus clients were seen under other funding sources like Medicaid and Medicare.
- Our ADAP staff served **252** clients and of those **94.05%** are virally suppressed.



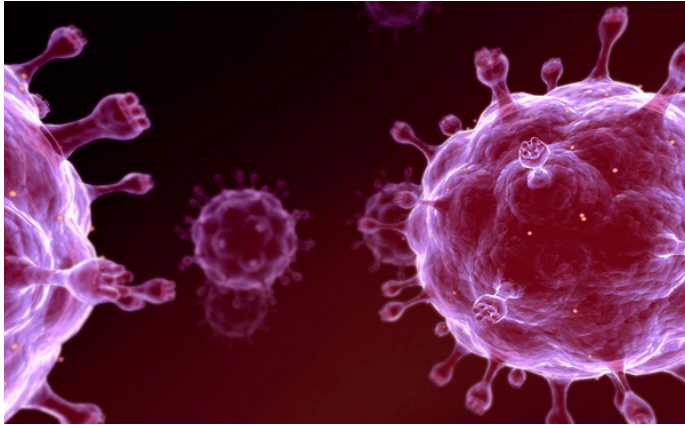
MONKEYPOX

DOH-Pasco administered **364** doses of the Monkeypox vaccines. Also mention outreaches at Sawmill.



SEXUAL TRANSMITTED DISEASES

1,611 clients received care, there was a total of **2,246** visits and **11,871** total services.



VITAL STATISTICS

DOH-Pasco issued **9,736** birth certificates, **50,465** death certificates and **19** fetal deaths.

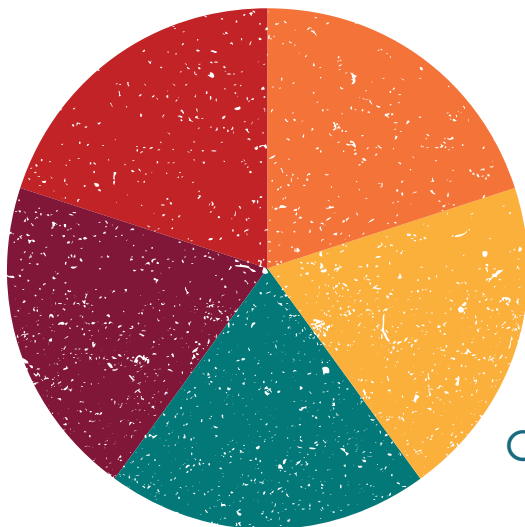


CHART WITH DATA WILL GO
HERE!!!

Highlights from 2021-2022



SUCCESSSES

- The Accreditation Council for Education in Nutrition and Dietetics (ACEND) approved the Pasco County Dietetic Internship's request to be recognized as a graduate degree program.
- DOH-Pasco teamed up with the Florida West Coast Breastfeeding Task force for the Big Latch-on event. There were 141 attendees and 60 people participating as vendors.
- DOH-Pasco partnered with BayCare, DOH-Hillsborough, DOH-Pinellas and DOH-Polk to complete the 2022 Community Health Needs Assessment (CHNA).

Health Equity, Minority Health: Transportation Project:

Premier Community Health was selected for the project funding provided by DOH-Pasco in support of the project to increase transportation services for mental health services which ran from November 2022 to April 2022.



Substance Misuse Project & CORE:

- The process flow has been finalized. It starts with an identified overdose and the emergency response can care navigation arrive. The individual is transported to a specialty subject matter hospital like trauma center. Focus is placed on sustainable clinical pathway and system of care. Next the individual will be transferred to a sustained multi-specialty medical group. The individual is started on medication assisted treatment. Following the individual is offered stabilization treatment in sober living up to three months
- 36 Naloxone were distributed and 31 were reported in reversals.

PACE-EH Project:

- Commissioner Kathryn Starkey hosted a curbside pickup community clean-up in the Buena Vista area in Holiday on September 10, 2022, with removal of 34 tons of waste. In addition, September 9th, 2022, residents were offered to bring waste to Pasco County Solid Waste on Citizen's drop off at no cost.
- To better serve the community Code enforcement starting September 2022 will be available Tuesday and Thursdays 11:00 a.m. to 8:00 p.m. and in operation during the weekends.
- DOH - Pasco along with stakeholders in the process of creating a playground in Aloha Gardens Park
- Safe neighborhoods are being addressed by allowing the citizens to petition for a reduction in the current speed limit of a street.
- The West Action Market Committee along with DOH-Pasco is seeking out grocery stores, convenient stores, bus stops and parks to add bike racks and bike fix stations.
- Keep Pasco Beautiful Cleanup Event: The community pulled through with more than 1,200 volunteers for the annual Keep Pasco Beautiful cleanup in September picking up more than 46,000 pounds of trash and litter along roadways, public spaces, and waterways from 40 locations with a cost benefit of \$105,184.40.
- August 2022, Pasco County was awarded a little over a million dollars (\$1,040,000) from the Department of Health in Tallahassee, to assist partners on a local level approach to combat the opioid overdose epidemic.



OFFICE LOCATIONS

FLORIDA DEPARTMENT OF HEALTH IN PASCO COUNTY

LITTLE ROAD

10841 Little Rd,
New Port Richey, FL 34654
727-619-0300

DENTON AVENUE

11611 Denton Ave
Hudson, FL 34667
727-861-5661

MAIN STREET

5640 Main Street Suite 100
New Port Richey, FL 34652
727-841-4425

DADE CITY

13941 15th St.
Dade City, FL 33525
352-521-1450

WESLEY CHAPEL

33845 FL-54
Wesley Chapel, FL 33543
813-780-0740

NEW BUILDING:

7509 State Road 52
Hudson, FL 34667
Pasco.FLHealth.gov
@HealthyPasco

PICTURE OF ALL STAFF WILL GO ON THIS PAGE